



INSTRUCTION BULLETIN

No. 328291
Machine: T16
Published: 06-2011
Rev. 00

NOTE: DO NOT DISCARD the Parts List from the Instruction Bulletin. Place the Parts List in the appropriate place in the machine manual for future reference. Retaining the Parts List will make it easier to reorder individual parts and will save the cost of ordering an entire kit.

NOTE: Numbers in parenthesis () are reference numbers for parts listed in Bill of Materials.

Installation instructions for **kit number 322311**

SYNOPSIS:

This kit contains the parts needed to install the roll pin retaining kit onto T16 scrubber steering assemblies (**North America Machines Serial Numbers 00000 - 22033 / TNV Machines Serial Numbers 0000-0109**).

Please follow step-by-step instructions.

SPECIAL TOOLS / CONSIDERATIONS: NONE

(Estimated time to complete: Standard machines - 20 minutes / machines with side brush or Pre-Sweep - 45 minutes)



PROTECT THE ENVIRONMENT

Please dispose of packaging materials, old machine components, and hazardous fluids in an environmentally safe manner according to local waste disposal regulations.

Always remember to recycle.

PREPARATION: Standard machines and machines with side brush option only

1. Empty the solution and recovery tanks.
2. Park the machine on a clean level surface, turn off the machine, and remove the key.

FOR SAFETY: Before leaving or servicing machine, stop on level surface, turn off machine, and remove key.

3. Block the front and back of both rear tires.
4. Jack up the front end of the machine approximately 12" from the floor, position jack stands underneath the front of the machine, and lower the machine onto the jack stands. Refer to Fig. 1.

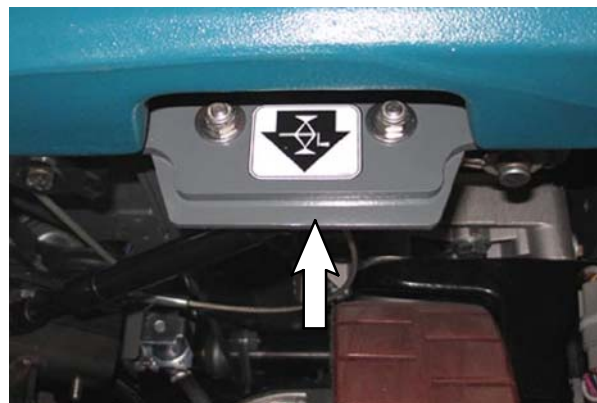


FIG. 1

FOR SAFETY: When servicing machine, block machine tires before jacking machine up. Use a hoist or jack that will support the weight of the machine. Jack machine up at designated locations only. Support machine with jack stands.

PREPARATION: Machines with Pre-Sweep option only

1. Empty the solution and recovery tanks.
2. Park the machine on a clean level surface, turn off the machine, and remove the key.

FOR SAFETY: Before leaving or servicing machine, stop on level surface, turn off machine, and remove key.

3. Block the front and back of both rear tires.
4. Remove the hopper from the Pre-Sweep assembly. Refer to the Operator Manual for instructions how to remove the hopper from the Pre-Sweep assembly.
5. Remove the brush from the Pre-Sweep assembly. Refer to the Operator Manual for instructions how to remove the brush from the Pre-Sweep assembly.
6. Center the jack underneath the Pre-Sweep frame and jack up the machine approximately 15" from the floor. Refer to Fig. 2.

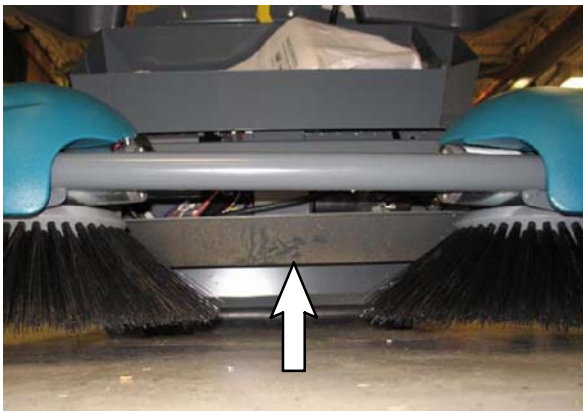


FIG. 2

7. Place jack stands underneath the Pre-Sweep tube weldment where the weldment is attached to both sides of the Pre-Sweep frame and lower the machine onto the jack stands. Refer to Fig. 3.

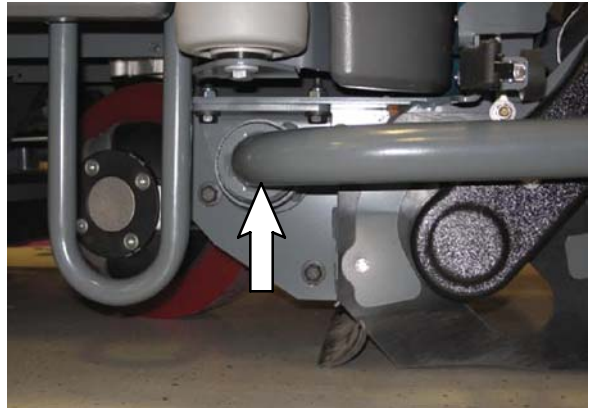


FIG. 3

FOR SAFETY: When servicing machine, block machine tires before jacking machine up. Use a hoist or jack that will support the weight of the machine. Jack machine up at designated locations only. Support machine with jack stands.

INSPECTION: All Machines

Ensure that the ends of the roll pin have no sharp edges. If the steering sprocket and roll pin have been damaged and have sharp edges as shown in Fig. 4, they will need to be replaced. If there are no sharp edges, proceed to the *INSTALLATION* section of this Instruction Bulletin.

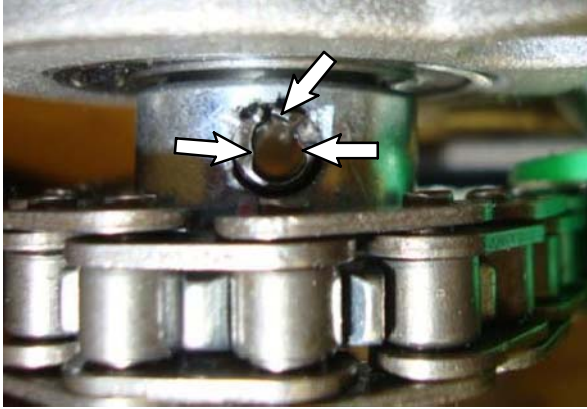


FIG. 4

NOTE: The wire installed in the INSTALLATION portion of this Instruction Bulletin does not need to be installed if the smaller sprocket and roll pin are replaced.

INSTALLATION: All Machines

1. Cut the 30" wire (1) in half. Set one length of wire aside.

NOTE: Save the extra piece of wire until finished installing the other wire in the following step. The extra wire will be needed if the first one is broken or damaged during installation.

2. Position the wire in the small steering sprocket. Refer to Fig. 5 for the location of the sprocket and Fig. 6 for installing the wire into the sprocket.

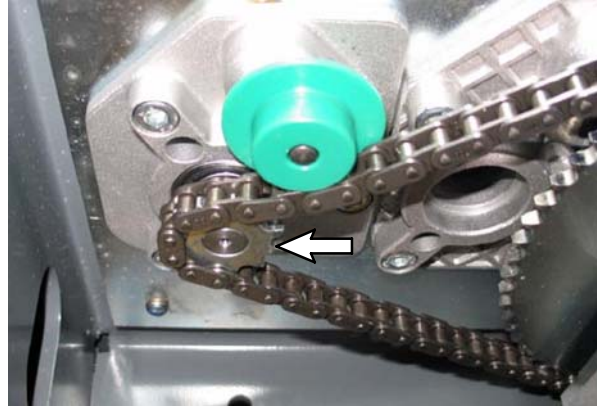


FIG. 5

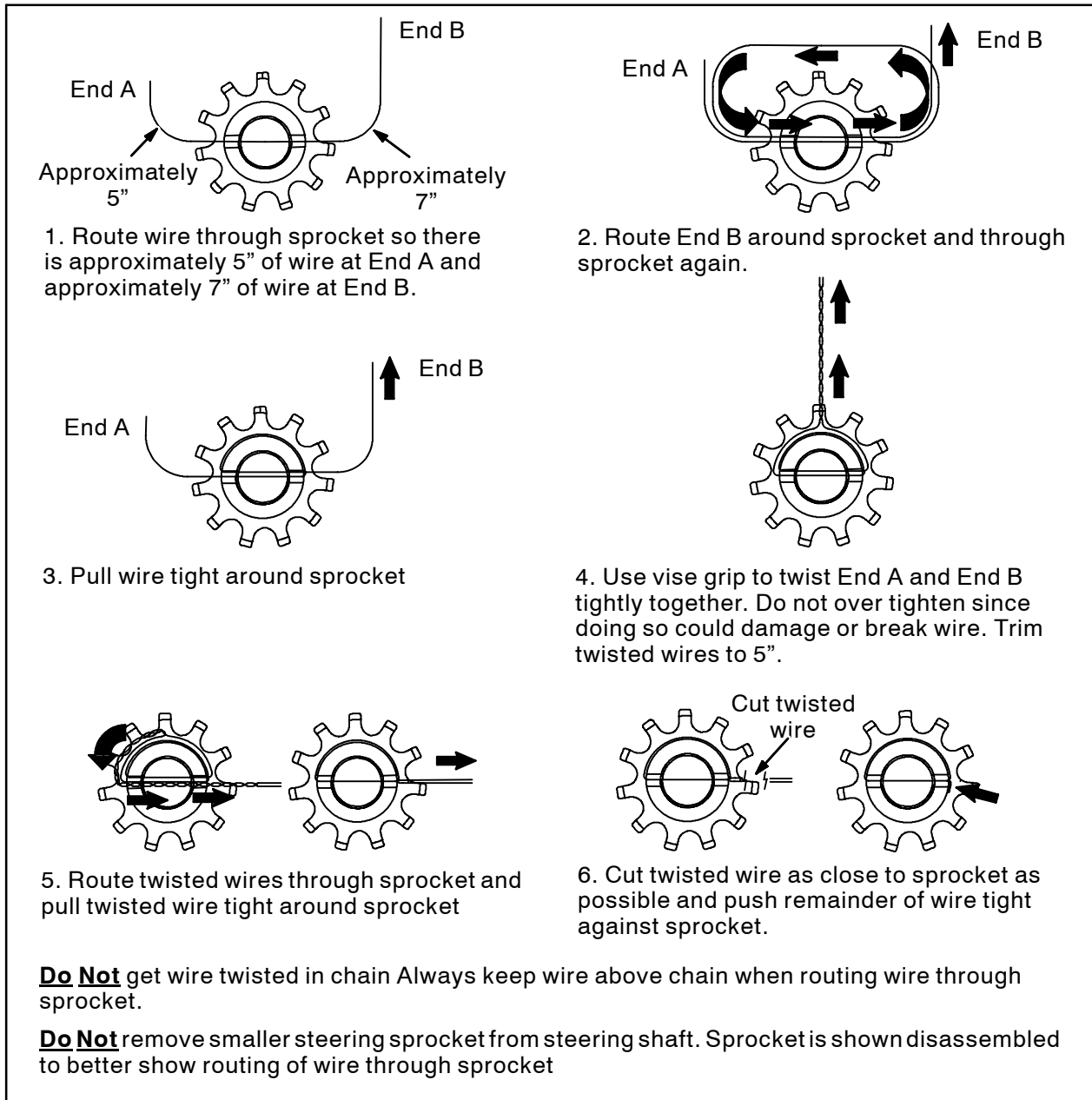


FIG. 6

3. Turn the steering mechanism through the entire range of motion and observe the chain and wire installed in the sprocket. The wire must not go into the steering chain at any time when the steering wheel is turned.

4. **Machines with optional Pre-Sweep or side brush only:** Raise machine off from jack stands, remove the jack stands from underneath the machine, and lower the machine to the floor.

TENNANT COMPANY
 P. O. Box 1452
 Minneapolis, MN 55440-1452